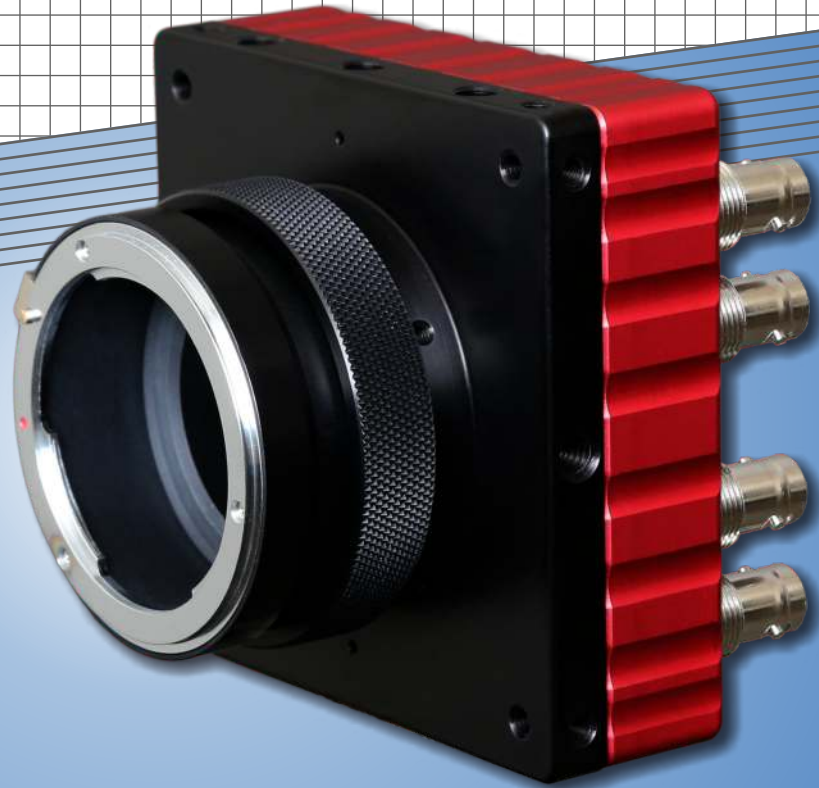


# Flare™

High Resolution  
Fast Frame Rate  
12 Megapixels

12M180  
12M125



CoaXPRESS  
CAMERA  
Link

4K x 3K @ 187fps (CXP)  
4K x 3K @ 124fps (CL)

## Features

- Monochrome, Color and Near-IR Models
- Global Shutter CMOS with Correlated Double Sampling
- CoaXPRESS or Camera Link Output
- Multiple Lens Mount Options (F, C, and Active EF)
- Selectable 8-bit or 10-bit Data Formats
- High Sensitivity with Low Noise
- Advanced Auto Exposure Control and Auto White Balance

## Applications

- Automated Inspection
- High Speed Motion Analysis
- Research Imaging
- Specialty Video Production



**IOI**  
IO INDUSTRIES

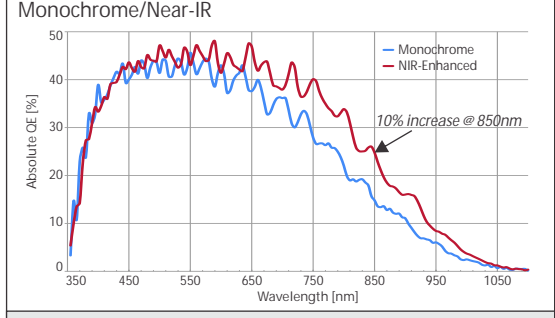
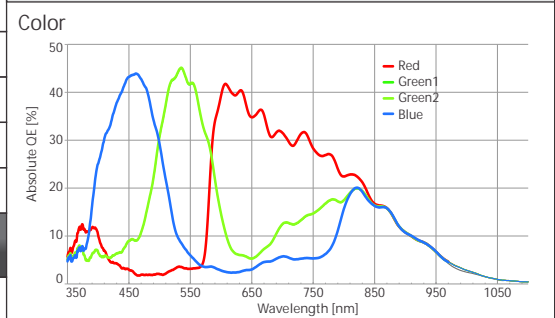
# Specifications

## Camera Specifications

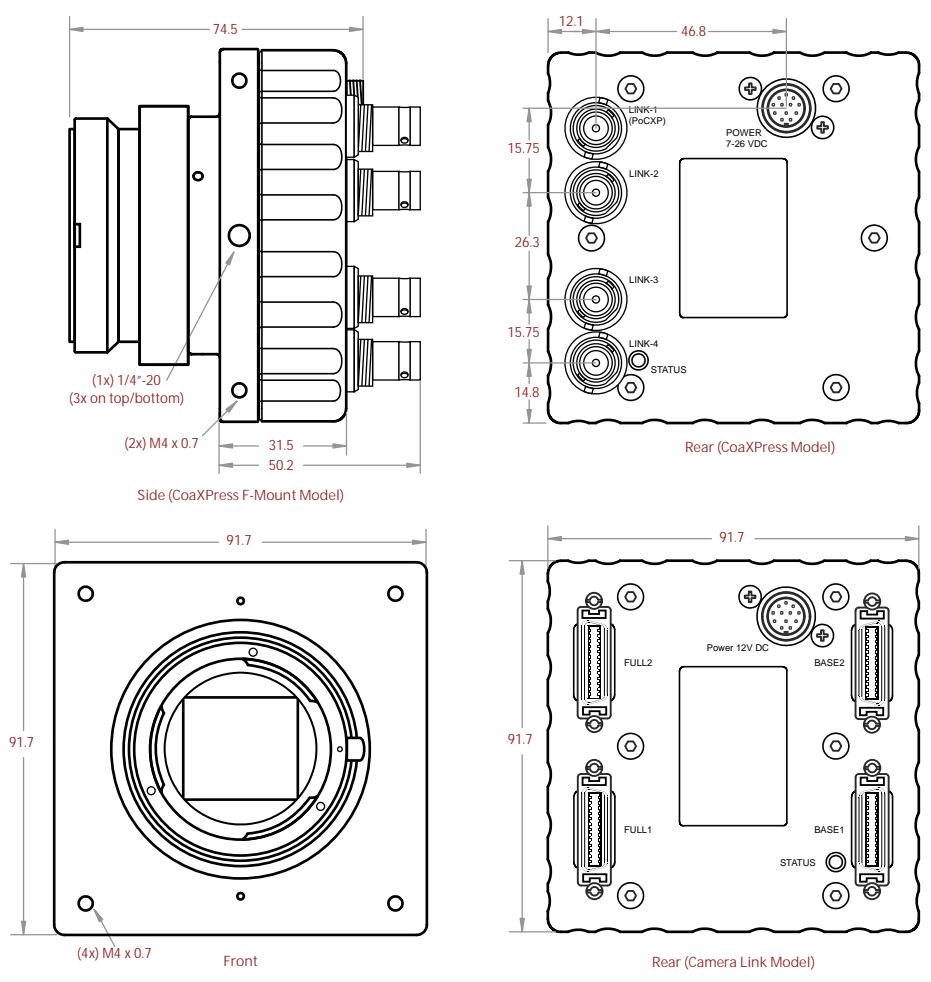
Sensor Type	CMOS w. Global Electronic Shutter (CMOSIS CMV12000)
Sensor Size (H x V)	4096 x 3072 (5.51 m square pixels)
Optical Format	Super 35mm / APS-C (28.1mm image circle at full resolution)
Dynamic Range / Sensitivity	60dB, 4.64 V/lux.s
Frame Rate (Full Resolution)	CX: 187 fps (8-bit), 149 fps (10-bit) CL: 124 fps (8-bit), 100 fps (10-bit)
Output Configurations	CX: 1/2/4 channels at 3.125Gb/s (CXP-3) or 6.25Gb/s (CXP-6) CL: Base, Medium, Single Full, Dual Full (80MHz Pixel Clock)
Additional I/O (Hirose 12-pin)	TTL-level trigger input/output, EF-mount lens control interface
Exposure Control	Programmable, edge-triggered, or auto-exposure control
Image Correction	Black level, column and row FPN, bad pixel replacement
Color Processing	Auto white balance (tracking or manual), programmable LUTs
Camera Configuration	GenICam (CX), ASCII commands (CL), or Flare Control software

Mechanical/Electrical
Lens Mount: M42 x 0.75 with F, EF and C-Mount adapters
Dimensions (no lens adapter): 91.7 x 91.7 x 44.5mm
Dimensions (with F-mount): 91.7 x 91.7 x 74.5mm
Operating Temperature: -30° to 45°C
Power Requirements:
CX: 12-24V DC or PoCXP, approx. 9.5W
CL: 12V DC, approx. 7.5W
Weight (typical): 490g (600g with F-mount)

### Spectral Response



### Mechanical Diagrams



### Frame Rate Chart

Frame Rates by Resolution and Bit Depth	12M180xCX (4x CXP-6)		12M125xCL (2x CL-Full)	
	8-bit	10-bit	8-bit	10-bit
4096 x 3072	187	149	124	100
4096 x 2160 (4K)	266	212	175	141
3360 x 2496	231	184	152	122
2048 x 2048	500	447	370	296
1920 x 1080	935	838	692	555
1000 x 1000	1009	904	924	598
512 x 512	1912	1718	1753	1139

### Ordering

Example: 12M180MCX-F

Camera	Lens Type
12M180 (CX)	F - F-mount
12M125 (CL)	C - C-mount
Sensor Type	Interface
M - Monochrome	CX - CoaXPress
C - Color (with IR filter)	CL - Camera Link
N - Near-IR Enhanced Monochrome	



visit us at: [www.ioindustries.com](http://www.ioindustries.com)

1510 Woodcock Street Unit 12, London, ON, Canada N6H 5S1 Tel: +1 519 663 9570 Fax: +1 519 663 9571 info2@ioindustries.com  
 Copyright© 2014 IO Industries Inc. Flare is a trademark of IO Industries. All other trademarks are the property of their respective owners.

Datasheet Rev. 2.3 (03/07/2015)  
 Specifications subject to change without notice